

Providing Coastal Communities with a New Perspective on Natural Resource Issues

Sue O'Halloran, University of Wisconsin-Extension

Cindy Hagley, University of Minnesota-Sea Grant

Amy Eliot, University of Wisconsin-Superior

Jesse Schomberg, University of Minnesota-Sea Grant

Collaborators:



Funding Sources:



Other Partners



A View From the Lake

- **Goal:** To provide **local decision makers, citizens,** and **educators** with science-based information about Lake Superior, its near shore habitats, and the relationship between land use and water quality.
- **How:** Provide people with an opportunity to view the shoreline from the lake, provide watershed and land use maps of the communities visited, introduce water sampling techniques and facilitate discussion of individual and community-wide land use practices.



The L.L. Smith, Jr. R/V



Owned and operated by the University of Wisconsin – Superior
60' steel research tug powered by a five cylinder direct-drive Kahlenberg diesel engine

A View From the Lake

a guided tour of Lake Superior & its coast



There's nothing like a view from the lake to give you a different perspective on Lake Superior's communities! Get ready for the 2006 View From the Lake trips aboard the L.L. Smith, Jr. Research Vessel. This year's program will bring you up-to-date on regional and global issues facing Lake Superior and how they affect our communities. Each 3-hour excursion along Lake Superior's coastline will feature information about climate change, stormwater, and mercury pollution, and how these issues are related to what's happening in your community. You'll also get the chance to do hands-on water sampling to see what's living in the water and on the bottom of the Big Lake.

You must pre-register to attend. Visit www.seagrant.umn.edu/vfl to register, or call (218) 726-8106.

Ashland	June 13 & 14	9am & 2pm
Washburn	June 16 & 17	9am & 2pm
Grand Marais	June 23 June 24 June 25	5pm 9am & 2pm 2pm
Silver Bay	June 27	9am & 5pm
Two Harbors	July 14 & 15	9am & 2pm
Duluth & Superior	July 6 & 20 July 8 & 21 July 9 & 22	5pm 2pm 9am

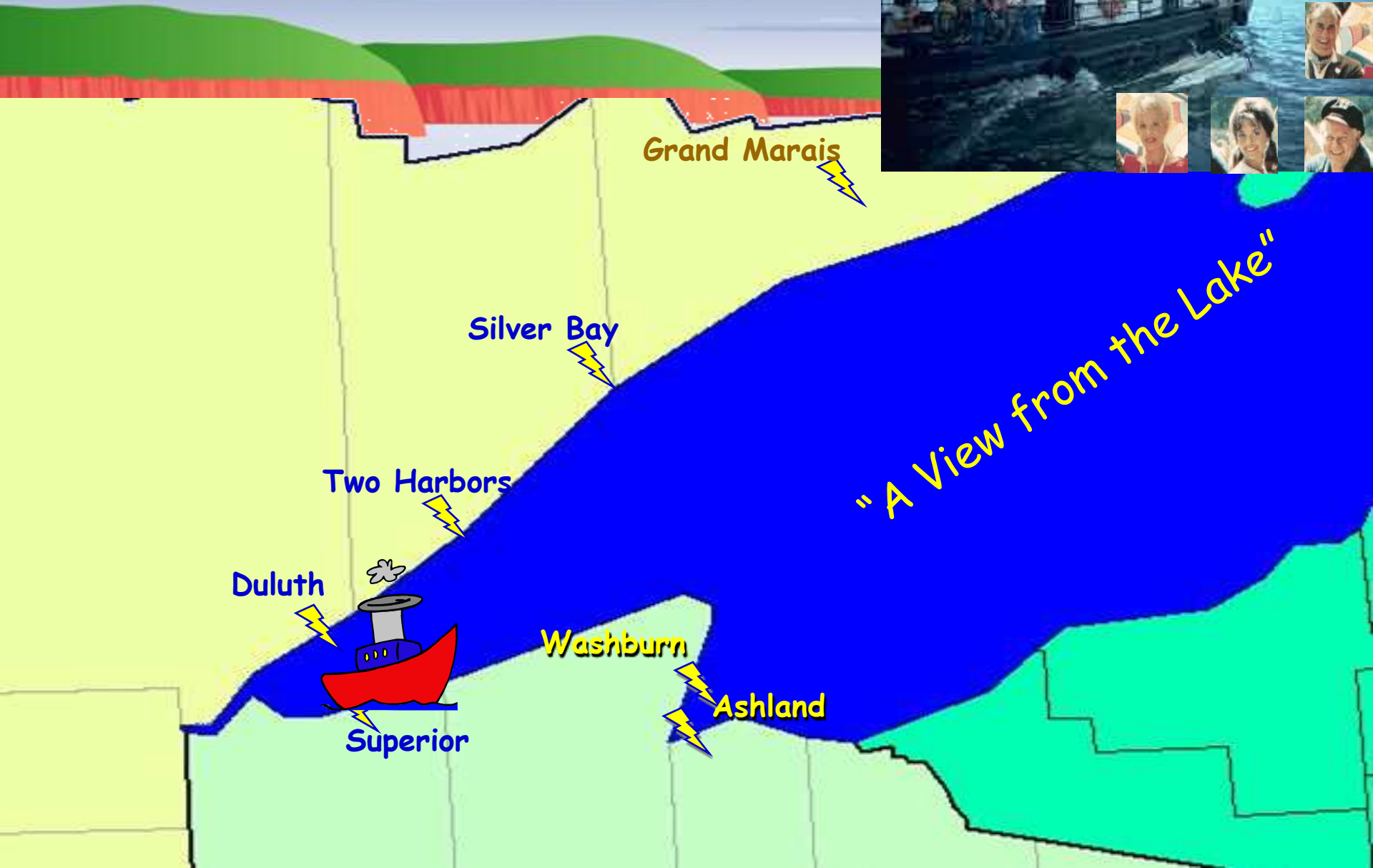
\$15

to register, go to www.seagrant.umn.edu/vfl/ or call Minnesota Sea Grant 218-726-8106

This project is funded by grants from the Wisconsin Department of Natural Resources and the Wisconsin and Minnesota Coastal Programs through the Coastal Zone Management Act, which is administered through the National Oceanic and Atmospheric Administration's Office of Ocean and Coastal Resource Management.



Where Have We Been?



“A View from the Lake” Overview

- 2004: 6 Ports, 20 trips
 - Focus: Land use, water quality, watersheds
- 2005: 8 Ports, 27 trips
 - Focus: Coastal wetlands, fisheries
- 2006: 6 Ports, 24 trips
 - Focus: Stormwater, climate change, Hg⁺
- 2007: 5 Ports, 16 trips
 - Focus: Native fish populations, food webs, limnology

What do we do on the Boat?

- Short Presentation on Land Use and Water Quality



Linking Land Use to Water Quality

Logos included in the collage:

- NEMO Northland
- NEMO National Network
- GREAT LAKES Regional Water Quality Program
- WISCONSIN DEPT. OF NATURAL RESOURCES
- WISCONSIN COASTAL MANAGEMENT PROGRAM
- Lake Superior Research Institute
- Sea Grant Minnesota



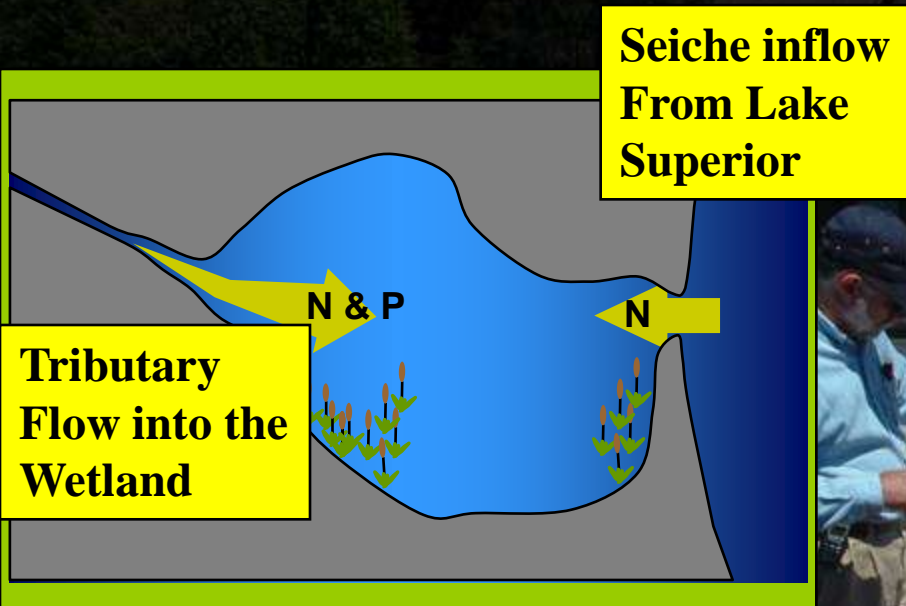
What do we do on the Boat?

- **Two Concurrent Sessions:**
The Land-Water Connection – Our impacts on Lake Superior's habitats



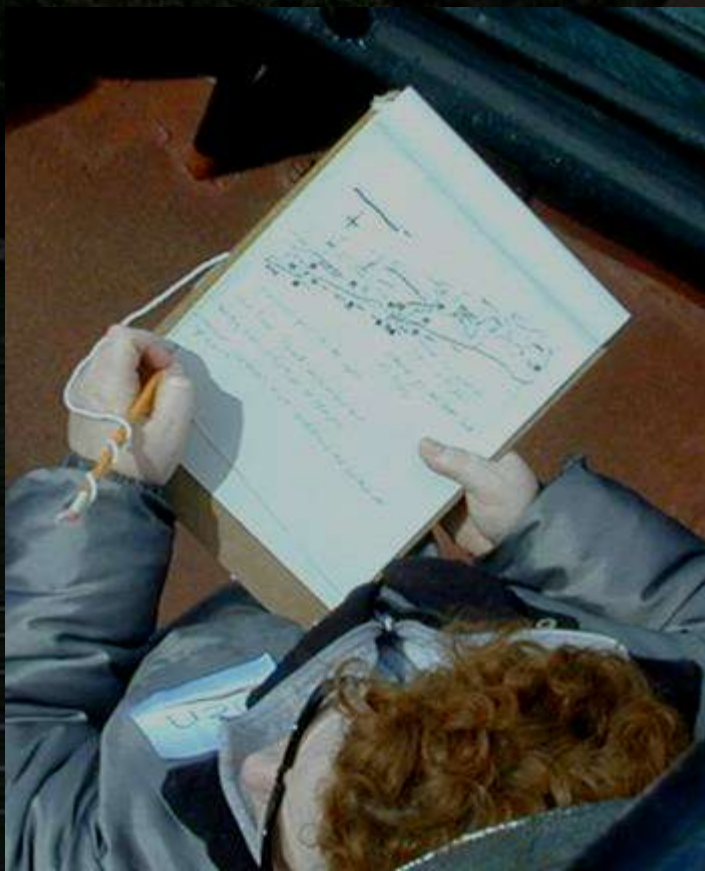
What do we do on the Boat?

- Two Concurrent Sessions:
Fisheries and Coastal Wetlands, and their ties to land use



What do we do on the Boat?

- **Two Concurrent Sessions:**
Land Use in Your Community – Observe your shoreline from the lake



What do we do on the Boat?

- **Two Concurrent Sessions:**
Community development patterns, conservation design, development rights, and easements



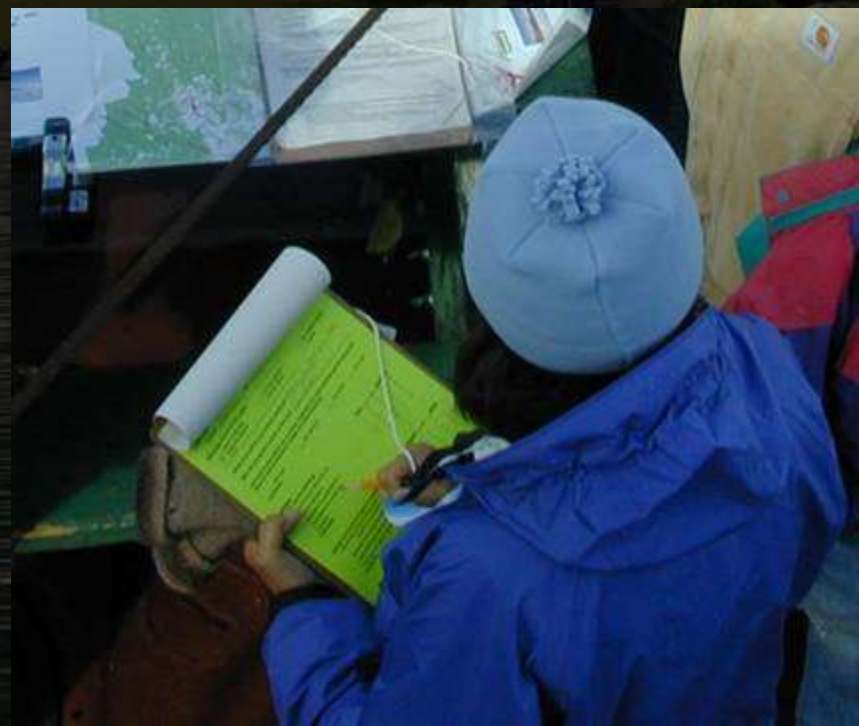
What do we do on the Boat?

- Water Quality monitoring

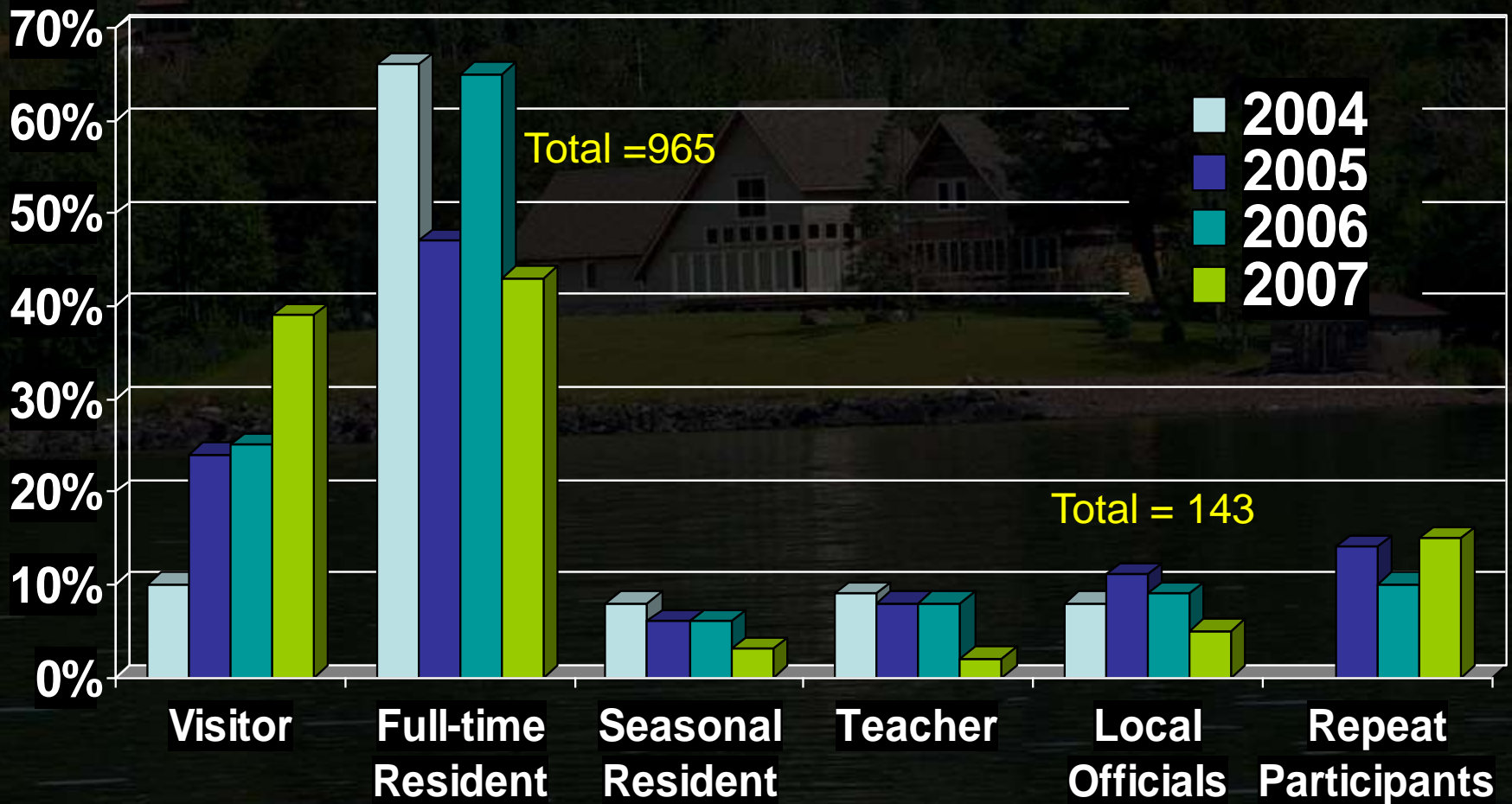


What do we do on the Boat?

- Evaluation!



Attendance



4-year total: >1800 people from >150 communities

"I may get more involved in development issues I've observed."



"Will be more conscious of things I do that may affect the lake."

"I will be very much more aware about lakes and land issues."

"This fuels my desire to build a rain garden"

Results

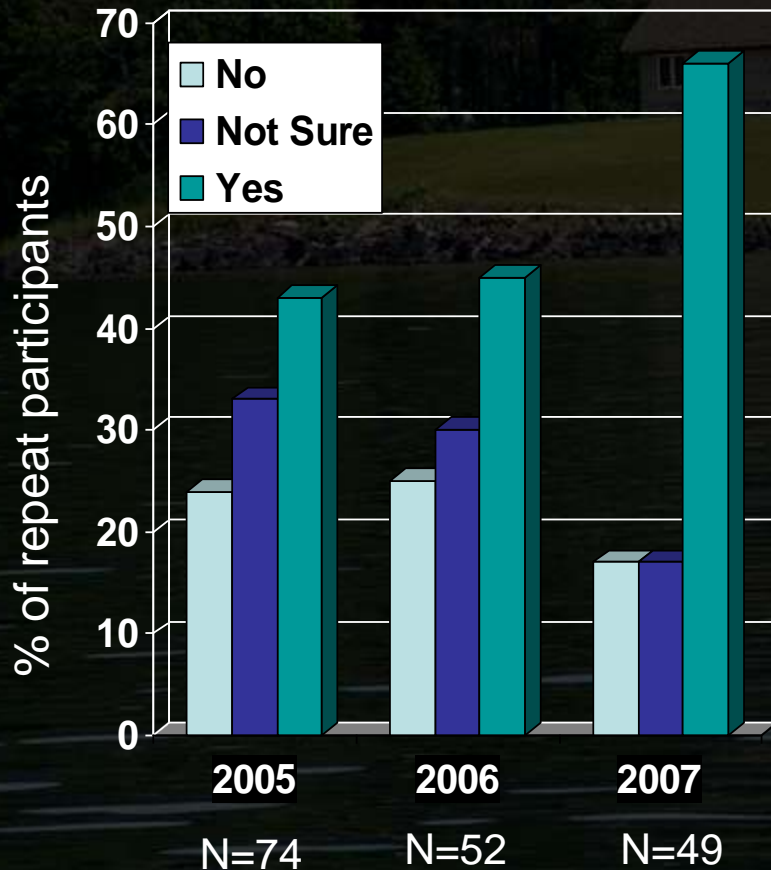


"I will clean up after my dogs."

Repeat Participants

Did you take any actions... as a result of information received from this trip?

Total # repeat participants: 175



- Became a volunteer beach monitor
- Spoke about protecting Lake Superior
- Talked with Lake Association to promote lake quality
- Worked on septic system
- Voted for stormwater management
- Got a rain barrel
- Several chances to influence environmental decisions on County Level.

Positive Feedback

- Very informative – made abstract concepts about watersheds real.
- This helps me explain environmental issues about water to my students.
- I didn't know that imperviousness affects the watershed as much as it does!
- Staff were fun, friendly, knowledgeable, easy to talk to, enthusiastic, encouraging of involvement, practical.
- Excellent education – not too technical. Very informative – easy to understand.



Cast and Crew

- Sue O'Halloran UW Extension
- Cindy Hagley MN Sea Grant
- Jesse Schomberg, MN Sea Grant
- Amy Eliot, UWS - LSRI
- Captain Dan Rau, LSRI
- MN Coastal Program intern
- UWS students – deckhand & engineer

