



# Invasive Free Zone



# *Invasive Free Zone*



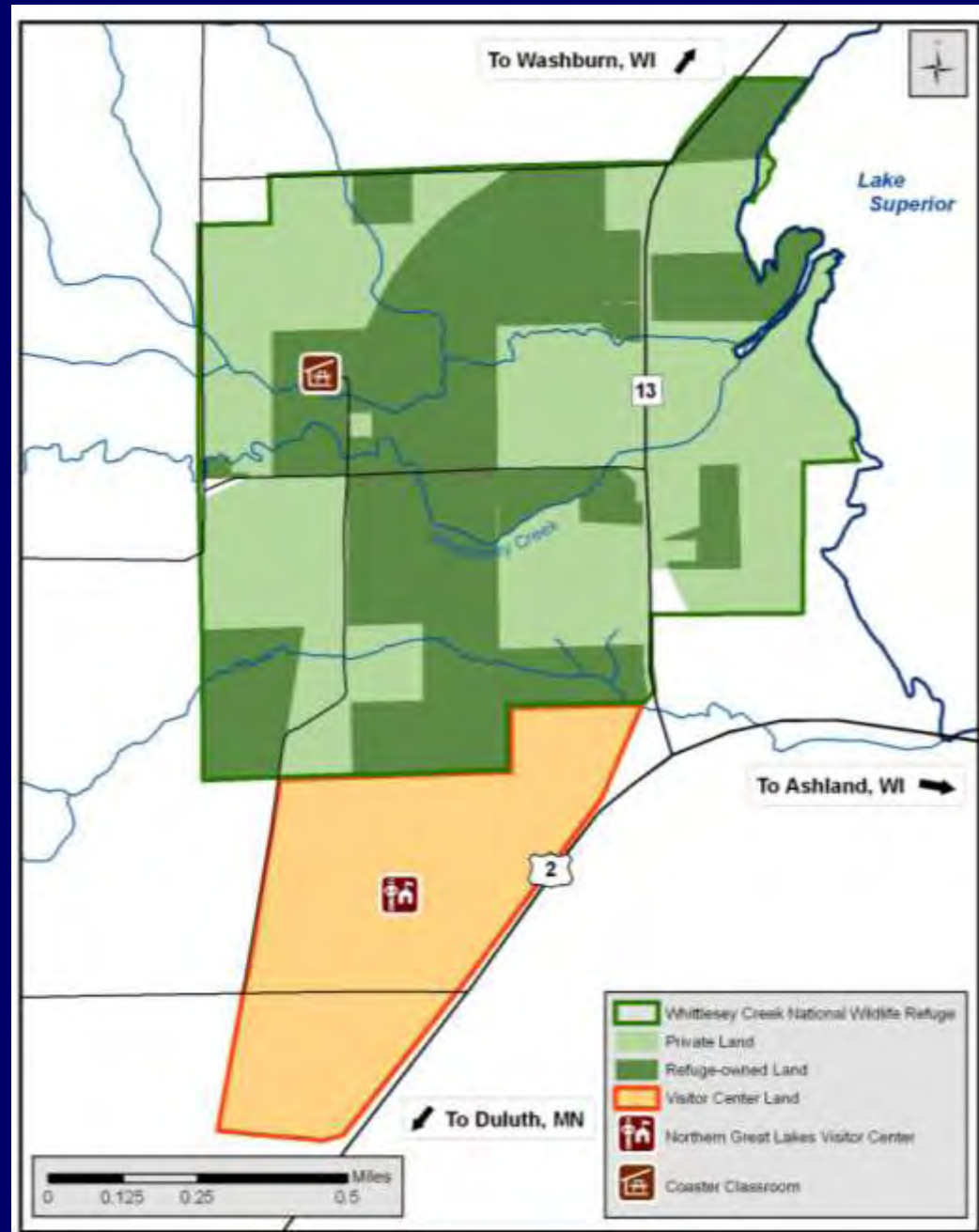
Reed canarygrass (*Phalaris arundinacea*)

- Invasive species identified as a priority by the Lake Superior Binational Program and others
- Project began as a concept in 2004
- Goal to eliminate invasive plants and restore native plant communities



# IFZ Ownership Map

Land Owner	Acres	% of IFZ
U.S. Fish & Wildlife	285	40 %
U.S. Forest Service	180	25 %
Private Lands	255	35 %
<b>TOTAL</b>	<b>720</b>	<b>100</b>



# *Invasive Free Zone*

## Landscape-scale

- multiple landowners, public and private
  - 16 of 17 private landowners have granted access
  - no cost to participating landowners
- multiple invasive species
  - over 20 species identified
  - 7 *high-priority* species
- multiple habitat types
  - coastal wetlands, upland forest, forested wetlands, shrublands

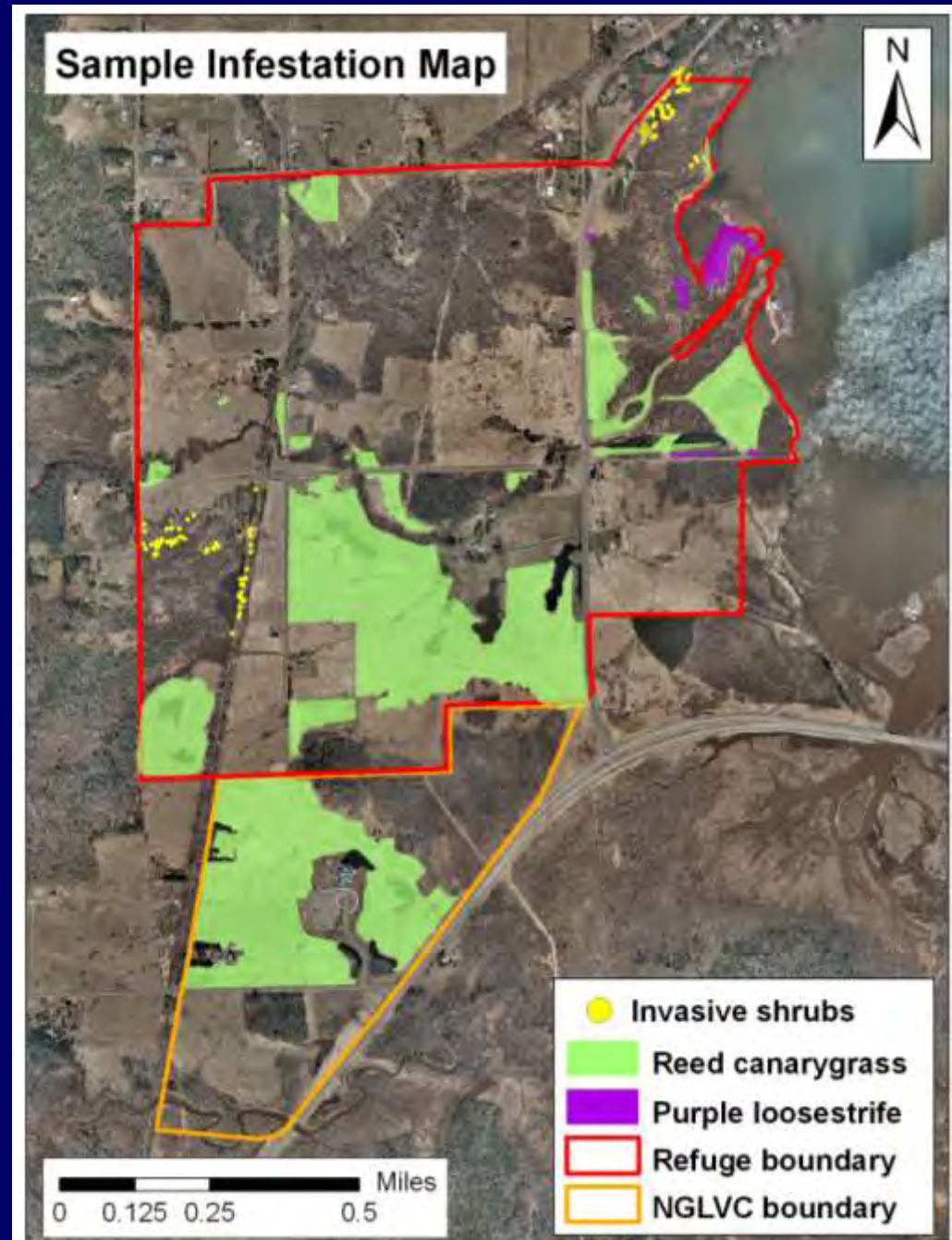


Lowland forest at the NGLVC.



# *Inventory & Mapping*

- North American Weed Management Association (NAWMA) standards
- Information collected includes:
  - *species*
  - *infested area (acres)*
  - *% cover or diameter*
  - *location (UTM)*
  - *date*
  - *landowner*
  - *treatment info*
- 67% of IFZ has been mapped to date, expect to finish in 2008



# Control

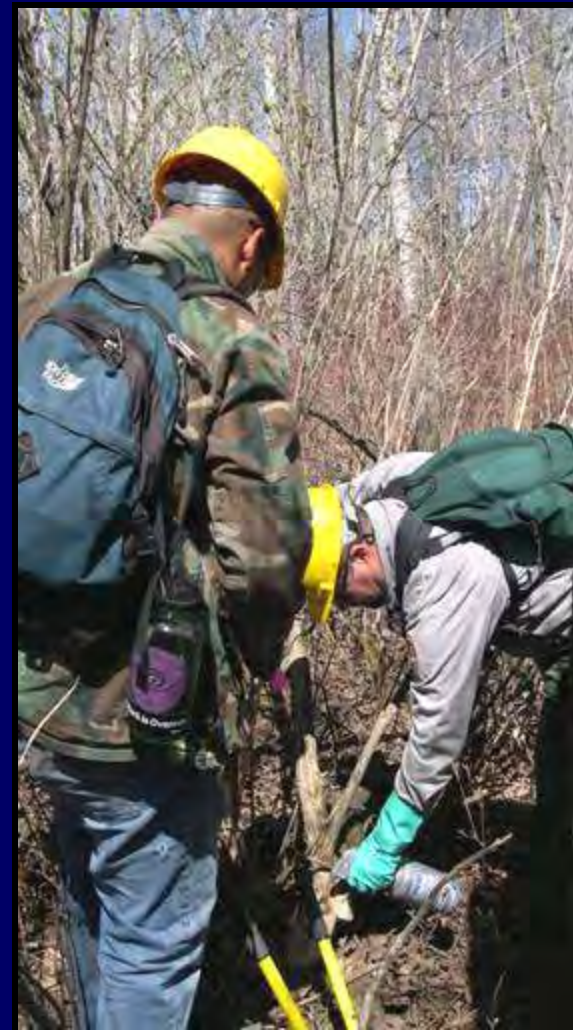
2004



2006



Beetle release site near the mouth of Whittlesey Creek. Loosestrife beetles have been released here annually since 2002, thanks to the support of GLIFWC and the Wisconsin DNR.



National Park Service crew treating exotic honeysuckle at the IFZ.

# *Restoration*



# *Education & Outreach*

- Purple loosestrife beetle display
- Reed canarygrass study display
- IFZ Field Day for local resource professionals
- Invasive species workshop for local landowners & gardeners
- Volunteer work days at IFZ



# *Invasive Free Zone*

- Cooperation from private landowners
- Major support and funding from:
  - U.S. Fish & Wildlife Service
  - U.S. Forest Service
  - Lake Superior Binational Program
  - EPA – Great Lakes National Program Office
  - National Park Service
  - Wisconsin Department of Natural Resources
  - Northland College



# **Invasive Free Zone**

## *Guidebook*



*A practical guide to developing  
an Invasive Free Zone*



## For more information:

Mike Mlynarek

29270 County Hwy G

Ashland, WI 54806

715-685-2666

[mike\\_mlynarek@fws.gov](mailto:mike_mlynarek@fws.gov)

Darienne McNamara

29270 County Hwy G

Ashland, WI 54806

715-685-2648

[darienne\\_mcnamara@fws.gov](mailto:darienne_mcnamara@fws.gov)

[www.fws.gov/midwest/WhittleseyCreek/](http://www.fws.gov/midwest/WhittleseyCreek/)