



Tribal Involvement in Lake Superior Fisheries

Presented by:
Reggie Cadotte, Policy Analyst

Great Lakes Indian
Fish and Wildlife Commission
(GLIFWC)

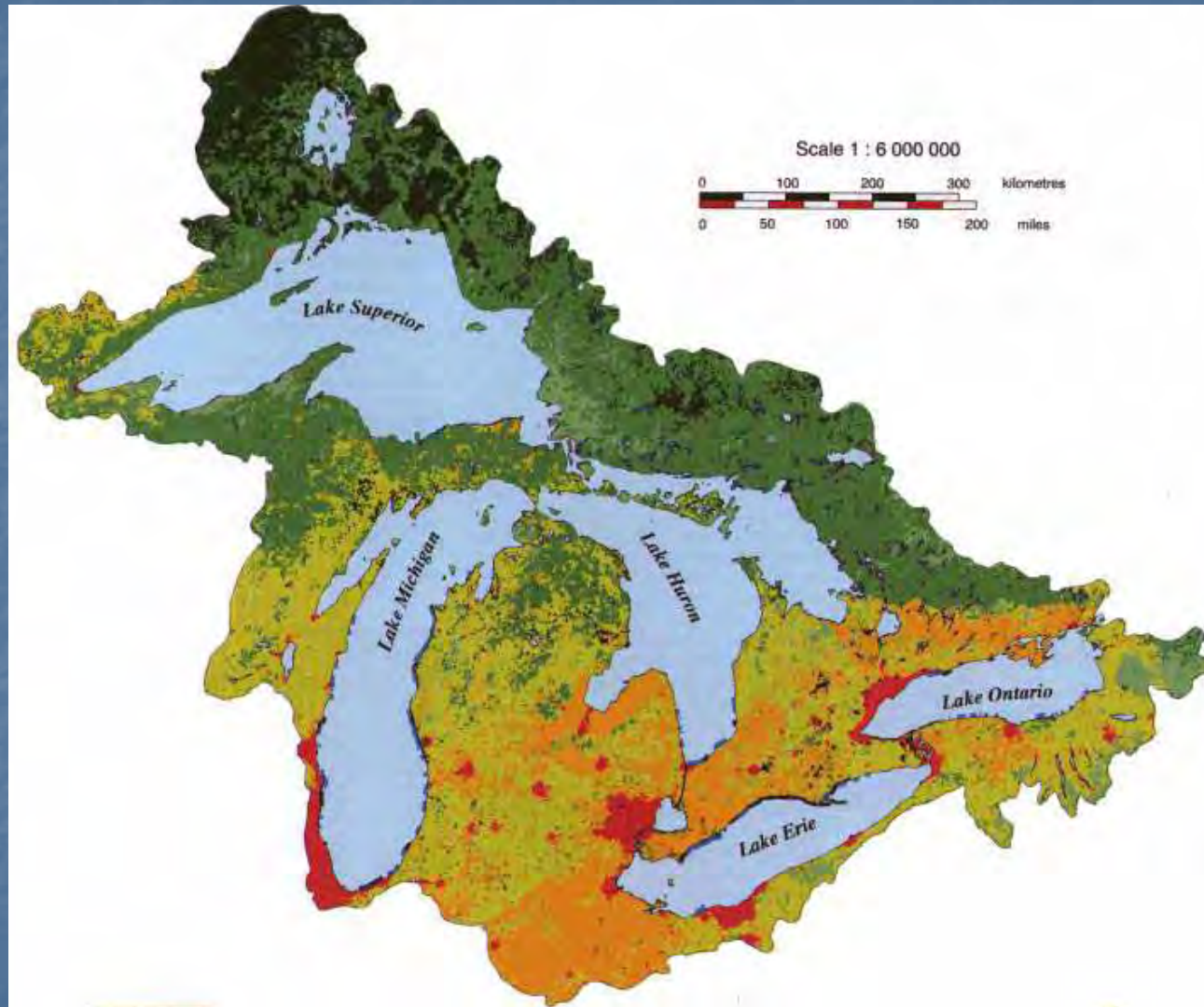
Tribes of the United States with ties to Lake Superior

- MN – White Earth, Red Lake, Leech Lake, Bois Forte, Fond du Lac, Mille Lacs, Grand Portage
- WI – St. Croix, Lac Courte Oreilles, Lac du Flambeau, Red Cliff, Bad River, Sokaogon
- MI – Keweenaw Bay, Bay Mills, Lac Vieux Desert, Sault Ste. Marie Tribe, etc.

Many of these Tribes are Bands of Lake Superior Chippewa!

THIS IS NOT A COMPLETE LIST BUT RATHER AN EXAMPLE OF
THE MANY TRIBES WITH TIES TO LAKE SUPERIOR!

The Great Lakes Basin!



Map from Wisconsin Sea Grant website:
<http://www.seagrant.wisc.edu/Communications/greatlakes/glacialgift/map.html>

GLIFWC Mission Statement

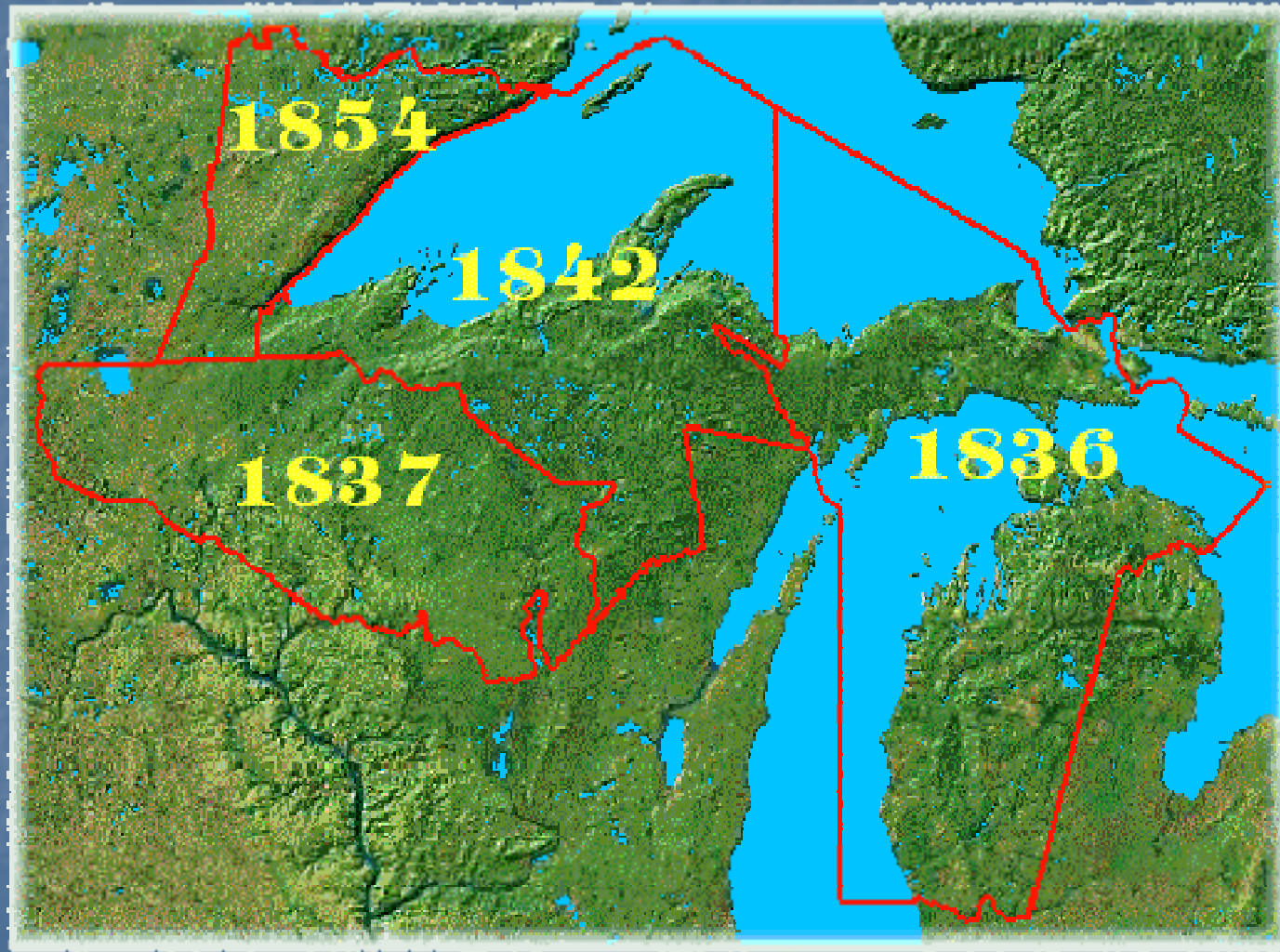
To assist member Tribes in the conservation and management of fish, wildlife, and other natural resources throughout the ceded territories, thereby ensuring access to traditional pursuits of the Ojibwe people;

To facilitate the development of institutions of Tribal self-government so as to ensure the continued sovereignty of its member Tribes in the regulation and management of natural resources;

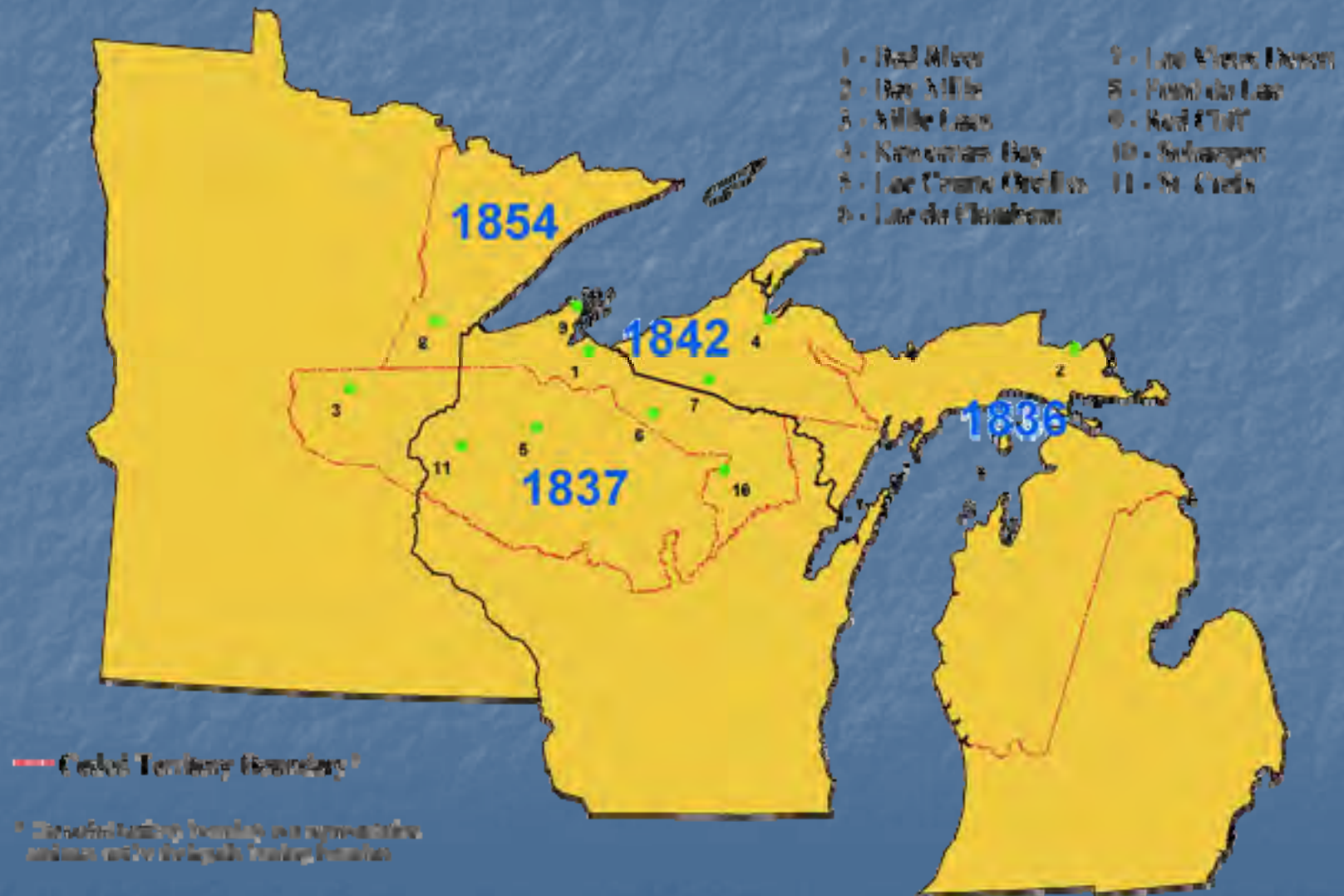
To protect ecosystems in recognition that fish, wildlife, and wild plants cannot survive in abundance in an environment that has been degraded;

To infuse traditional Anishinabe culture and values in all aspects of its mission.

Treaty Ceded Territories



GLIFWC Member Tribes



Tribes located on the Shores of Lake Superior

- Grand Portage, MN
- Red Cliff, WI
- Bad River, WI
- Keweenaw Bay, MI
- Bay Mills, MI
- Sault Ste. Marie, MI
- Other Tribes located in Canada

Reminder: Treaty rights held in Lake Superior Basin by other Tribes that are not physically located on the shores of Lake Superior!

Intertribal Organizations

- Great Lakes Indian Fish and Wildlife Commission
- Great Lakes Inter Tribal Council
- Michigan Intertribal Council
- Chippewa Ottawa Resource Authority
- 1854 Treaty Authority

Other Intertribal, Federal, State, and Local partnerships exist that provide assistance and support for Tribes in the region

Tribal Off-Reservation Involvement

- GLIFWC work
 - Fisheries Assessment and Harvest Monitoring
 - Invasive Species Monitoring and Management
 - Wetland Restoration / Enhancement
 - Harvest Permitting and Enforcement
 - Great Lakes Policy Involvement
 - Great Lakes Fishery Commission – Lake Superior Technical Committee, and Lake Superior Committee
 - Bi-national Program Involvement
 - Contaminant Testing Program
 - Other Intertribal Organizations' Efforts

Tribal On-Reservation Involvement

- Fisheries Monitoring and Assessments
- Native Fish Hatchery Operations
- Wetland
Restoration/Protection/Enhancement
- Invasive Species Control and Management
- Lake Superior Advocacy
- Tribal Integrated Resource Management
Plans

Additional Tribal Involvement

- Great Lakes Regional Collaboration Strategy
- Great Lakes Water Quality Agreement Review Report
- Great Lakes Compact and Water Conservation / Efficiency
- Binational Program
- LaMPs, RAPs, AOCs, etc.
- Making a Great Lake Superior Conference!

Education and Outreach

- Each Tribe is unique in structure
- Tribal Council Meetings
- Tribal Membership Meetings
- Collaborative Approaches (DOI, DOAg, DOD, DOT, etc, etc...)
- Making a Great Lake Superior Conference!



For more information contact:

Public Information Office

Great Lakes Indian Fish and Wildlife Commission

P.O. Box 9

Odanah, WI 54861

715-682-6619

www.glifwc.org